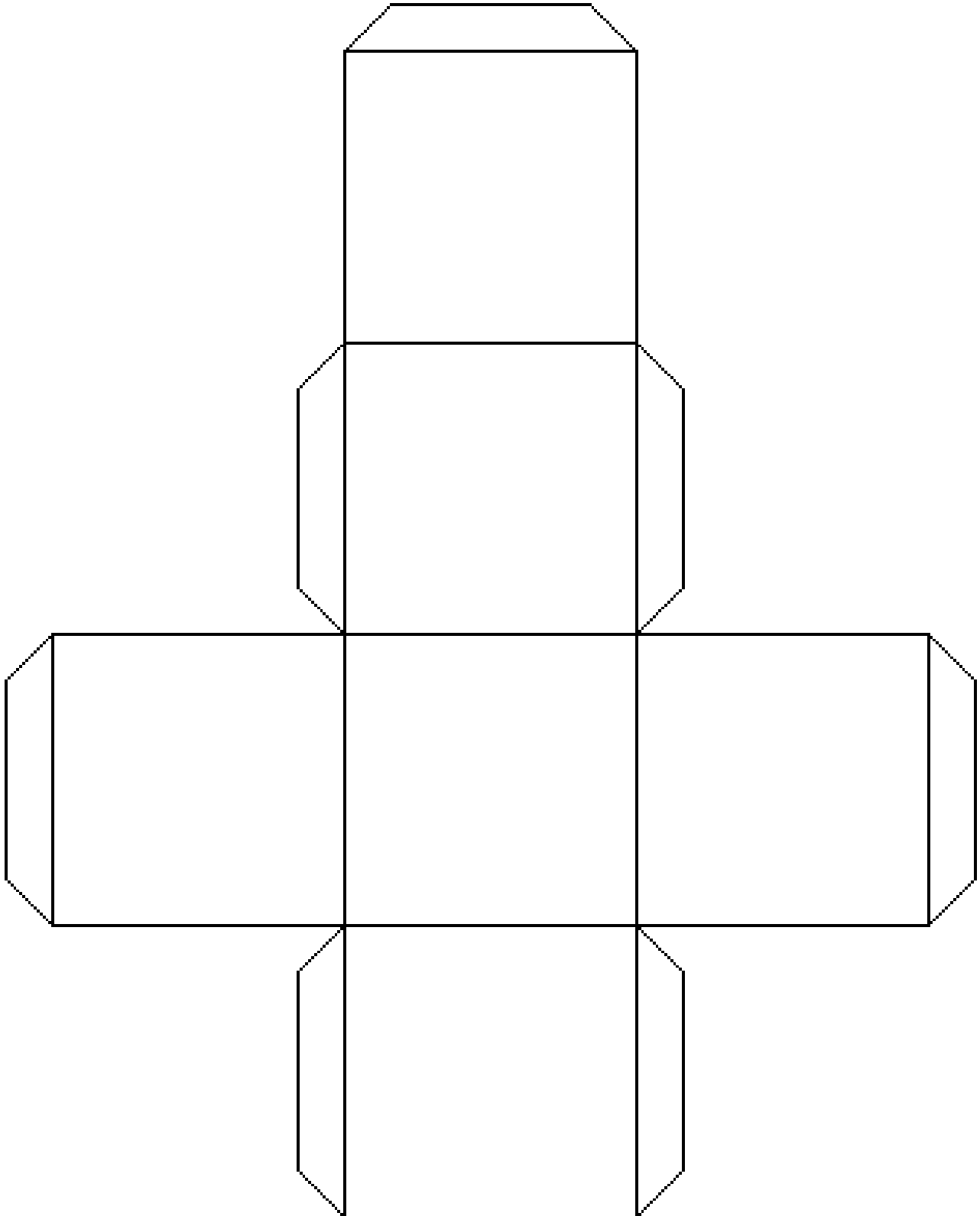


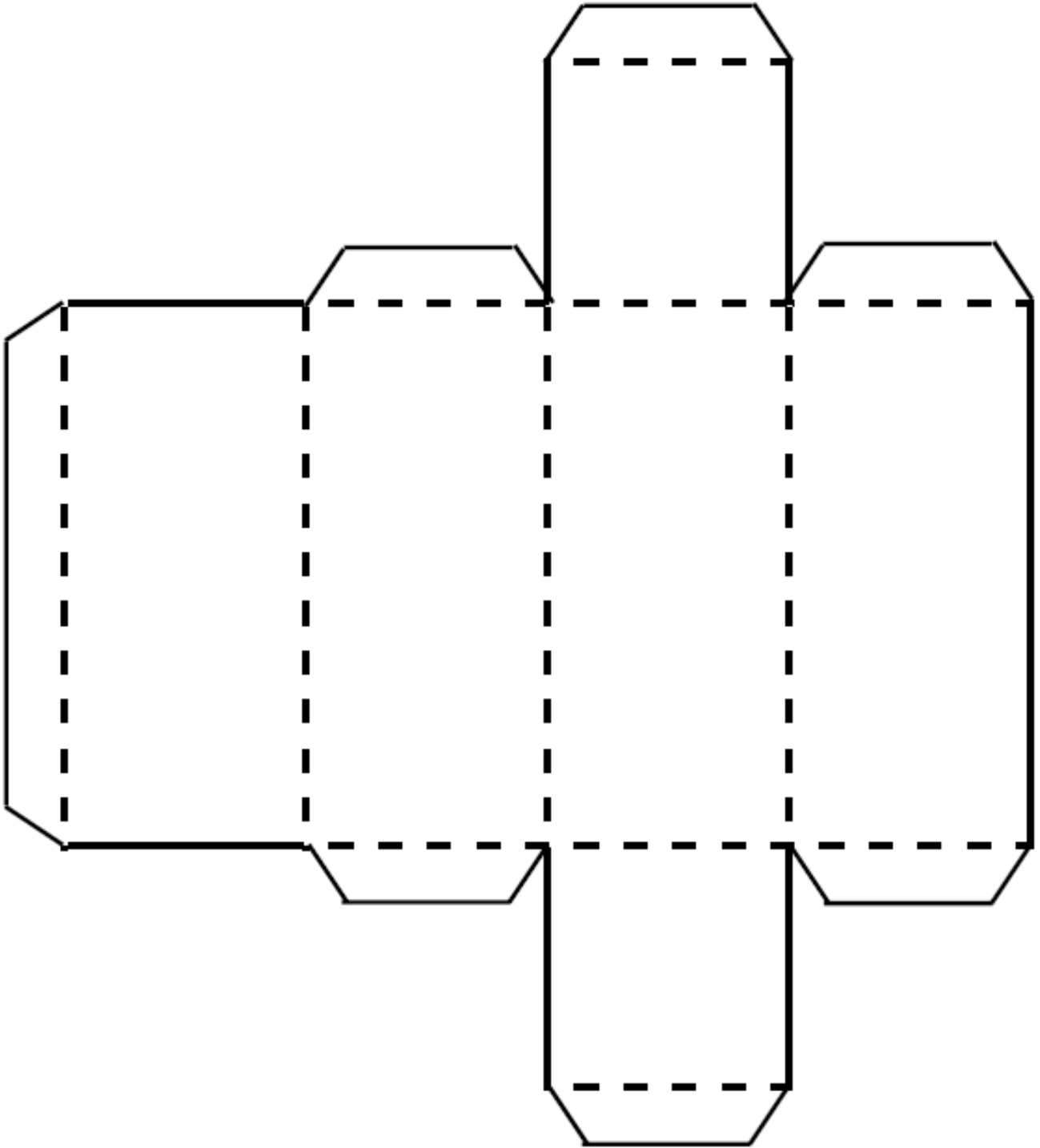
APPENDIX 2: NETS OF 3D OBJECTS

- 1) Before you cut out the nets allocated you, write the name of the 3D object on one of the faces.
- 2) Cut out the net and the tabs very carefully
- 3) Use a pen/pencil and a ruler to draw along the fold-lines – this makes them easier to fold
- 4) Put glue on the tabs. If necessary, put the glue on both pieces that have to be stuck together.
- 5) Carefully stick the 3D object together as accurately as you can. Accuracy is VERY important.

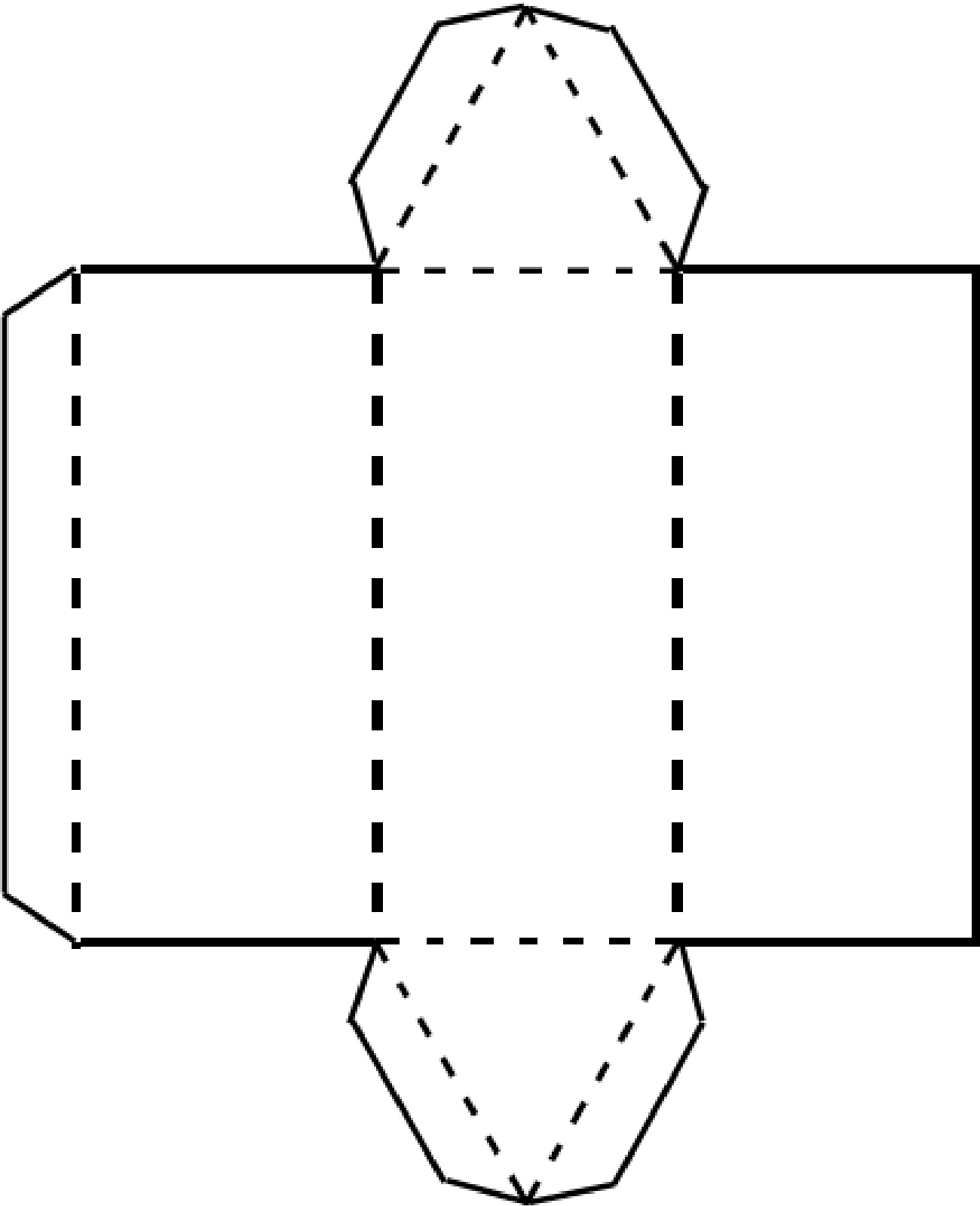
I. CUBE / REGULAR SQUARE PRISM



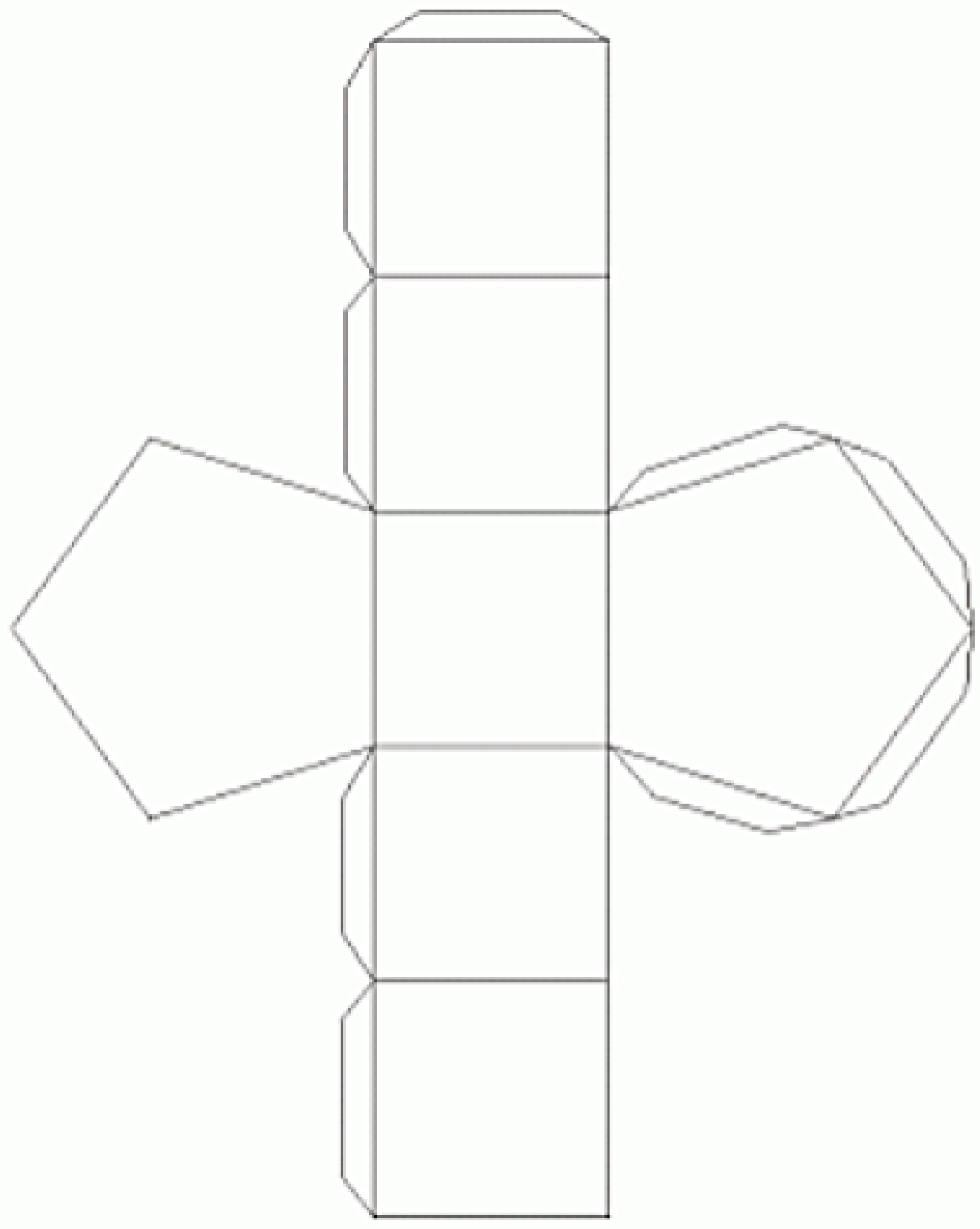
II. RECTANGULAR PRISM (OR CUBOID)



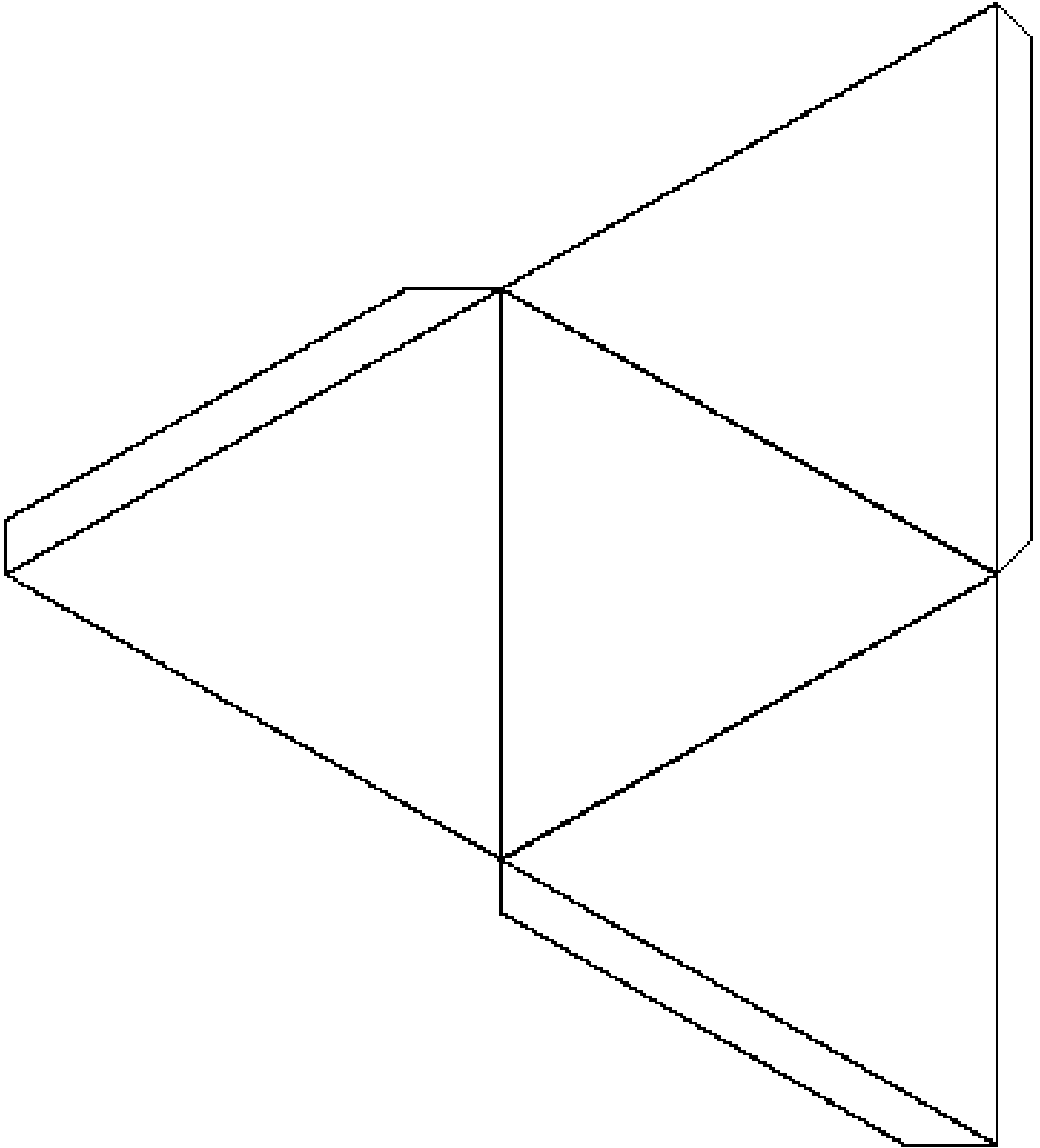
III. TRIANGULAR PRISM



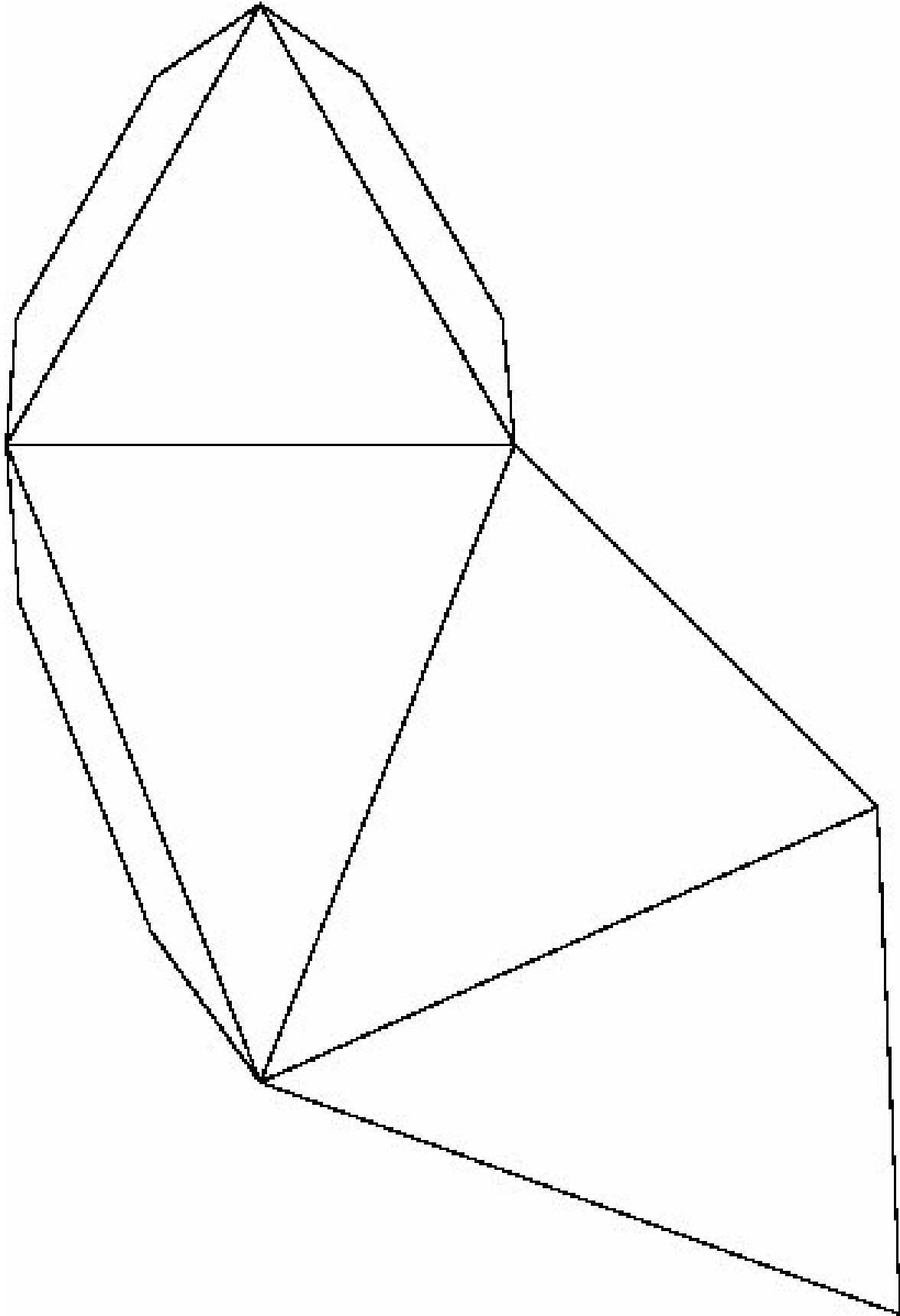
IV. PENTAGONAL PRISM



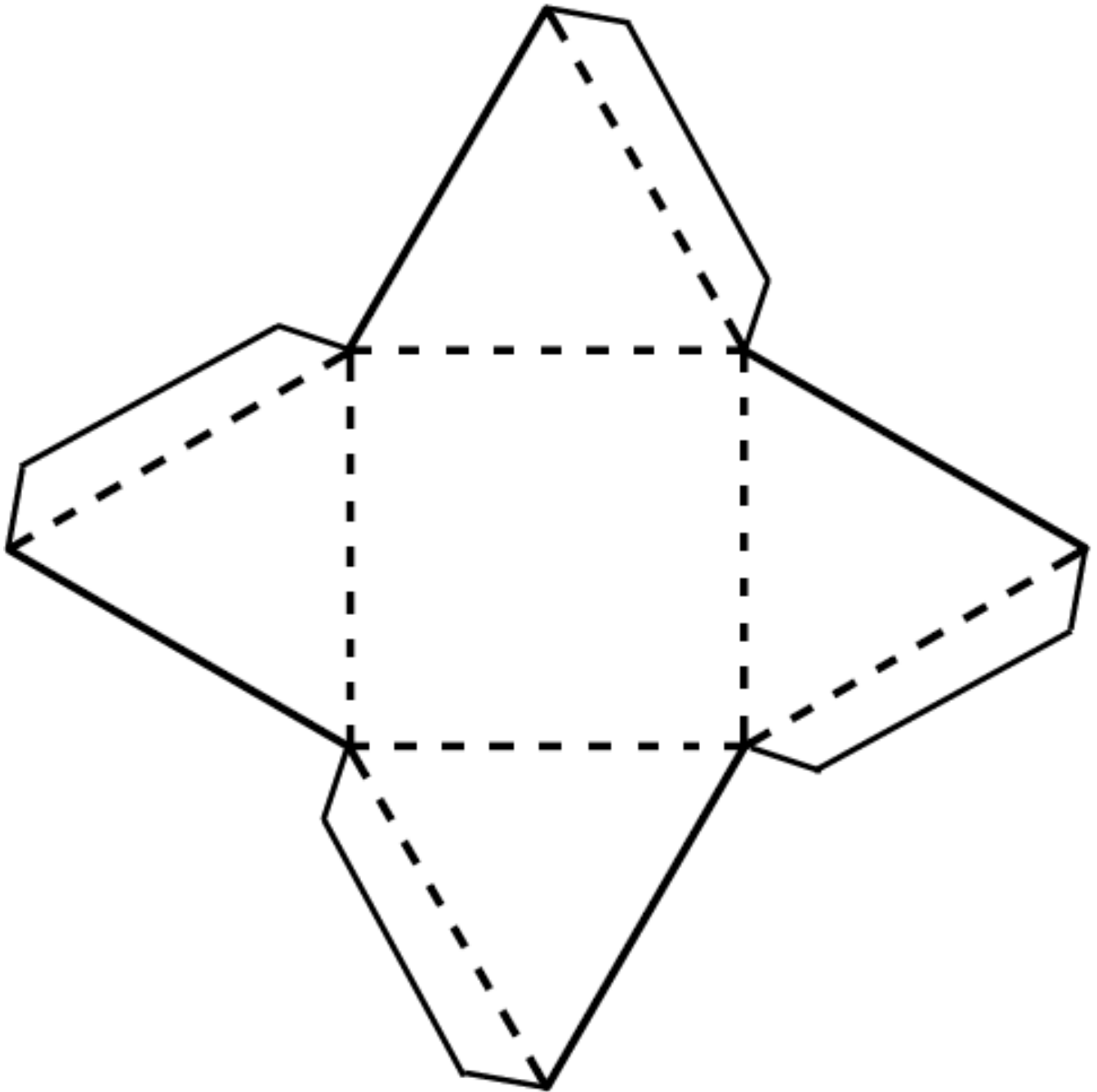
V. TETRAHEDRON / REGULAR TRIANGULAR PYRAMID



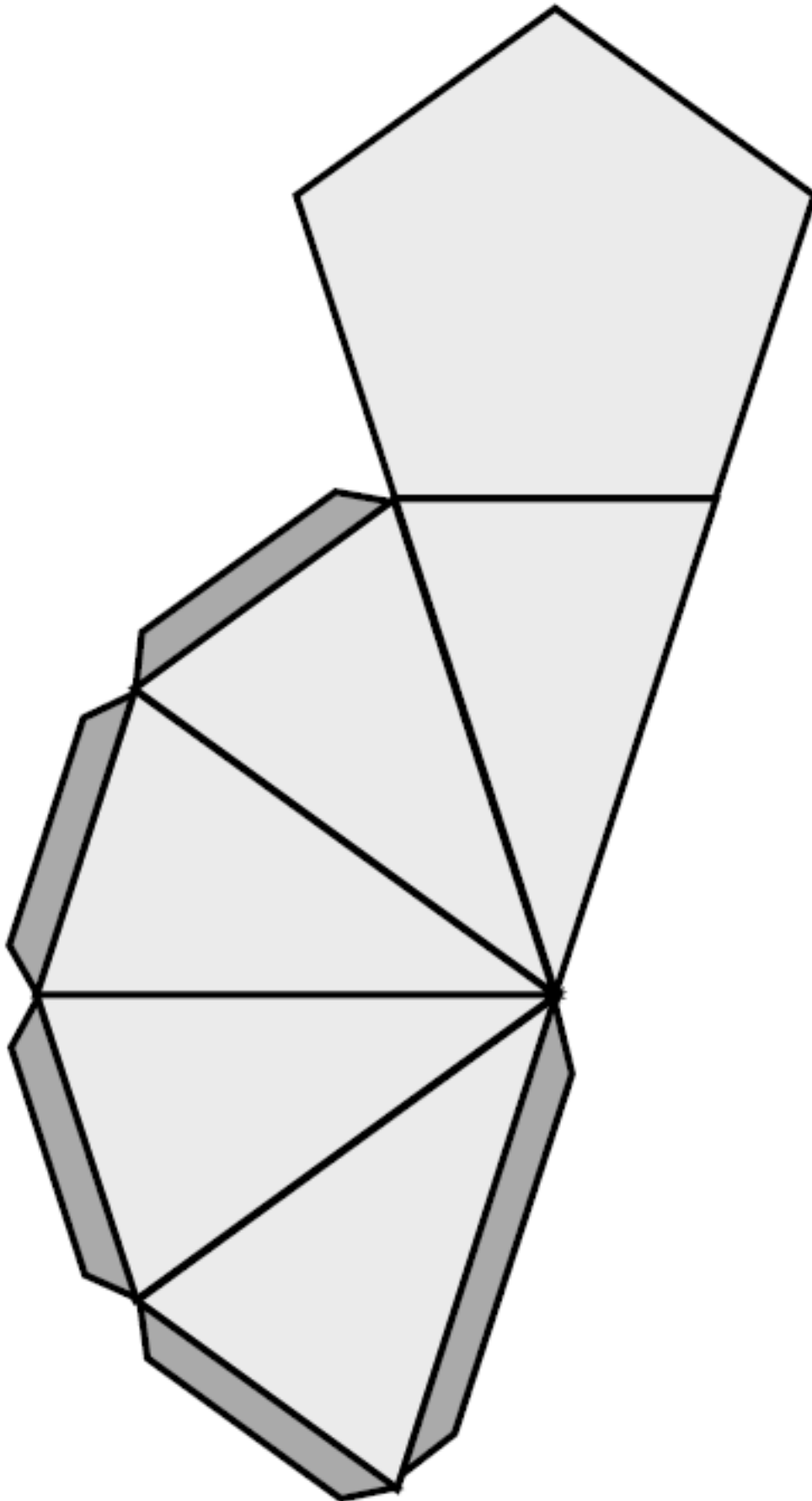
VI. TRIANGULAR PYRAMID / TRIANGULAR BASED PYRAMID



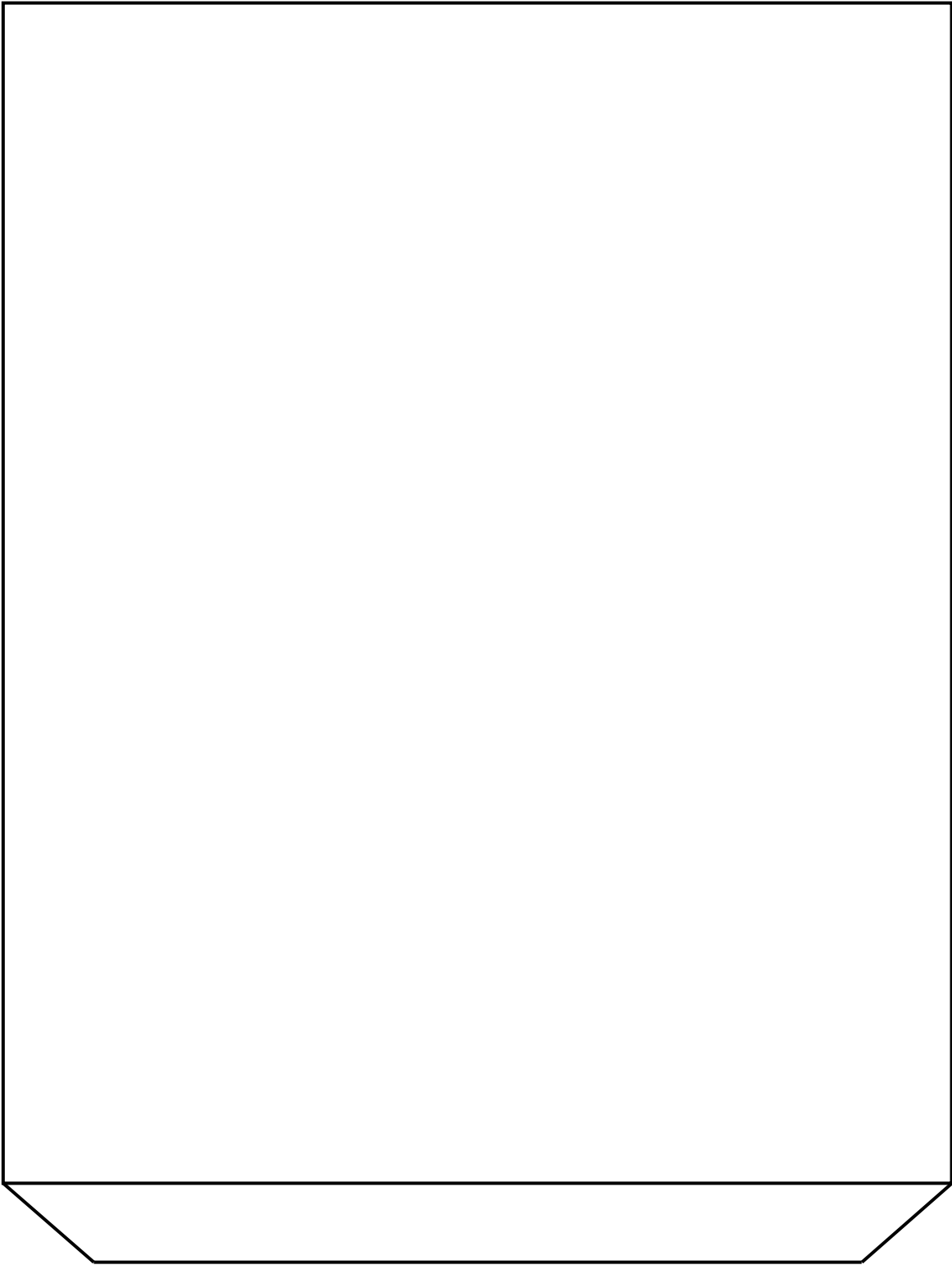
VII. SQUARE PYRAMID / SQUARED BASED PYRAMID



VIII. PENTAGONAL PYRAMID / PENTAGONAL BASED PYRAMID



IX. AN OPEN CYLINDER



X. AN OPEN CONE

*Note: Cut out the circle and then cut along the line from the edge to the centre
Only put glue onto the paper after you decide on the shape of your cone.*

